





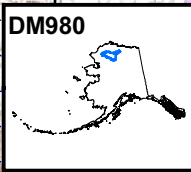
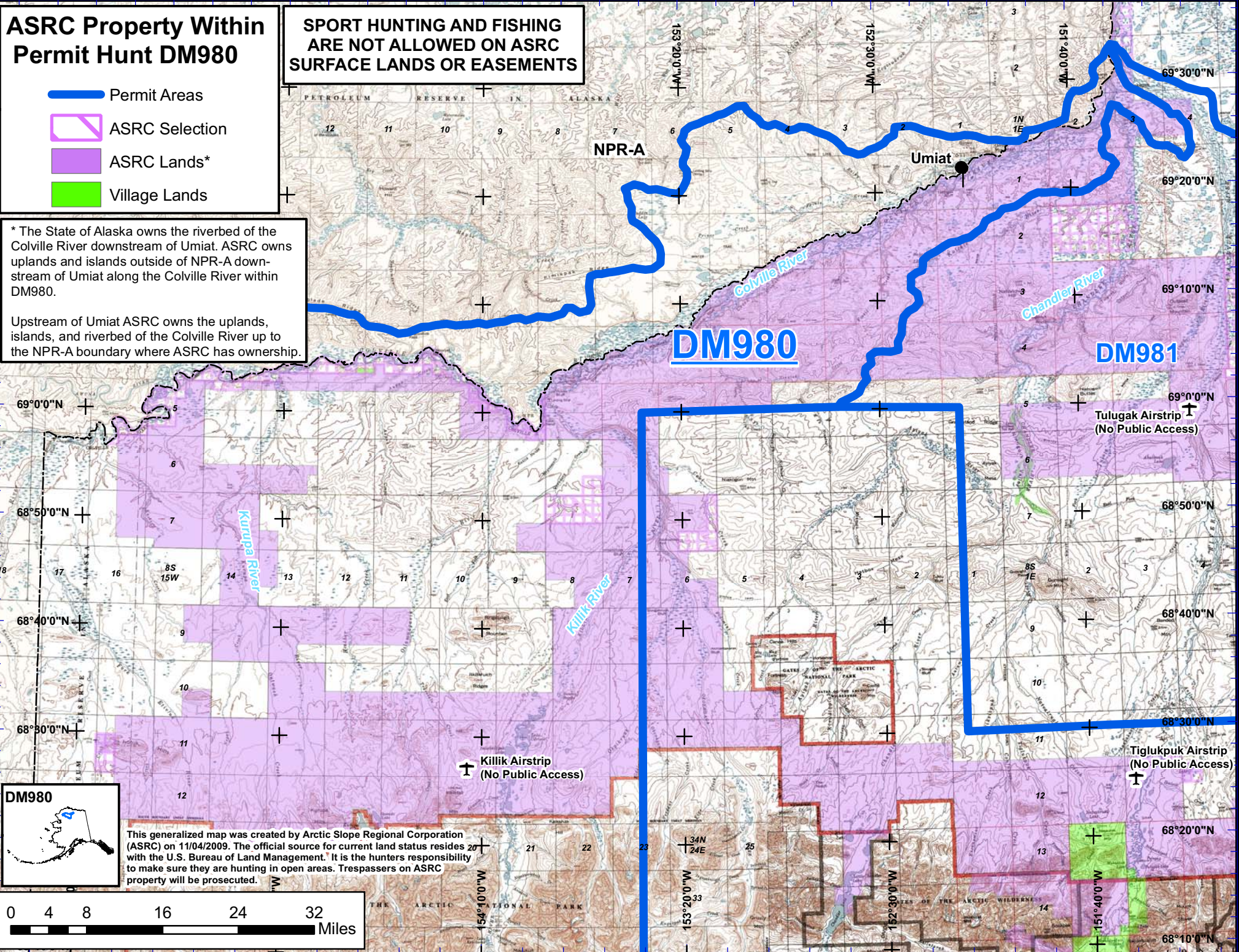
ASRC Property Within Permit Hunt DM980

SPORT HUNTING AND FISHING ARE NOT ALLOWED ON ASRC SURFACE LANDS OR EASEMENTS

-  Permit Areas
-  ASRC Selection
-  ASRC Lands*
-  Village Lands

* The State of Alaska owns the riverbed of the Colville River downstream of Umiat. ASRC owns uplands and islands outside of NPR-A downstream of Umiat along the Colville River within DM980.

Upstream of Umiat ASRC owns the uplands, islands, and riverbed of the Colville River up to the NPR-A boundary where ASRC has ownership.



This generalized map was created by Arctic Slope Regional Corporation (ASRC) on 11/04/2009. The official source for current land status resides with the U.S. Bureau of Land Management. It is the hunters responsibility to make sure they are hunting in open areas. Trespassers on ASRC property will be prosecuted.

