


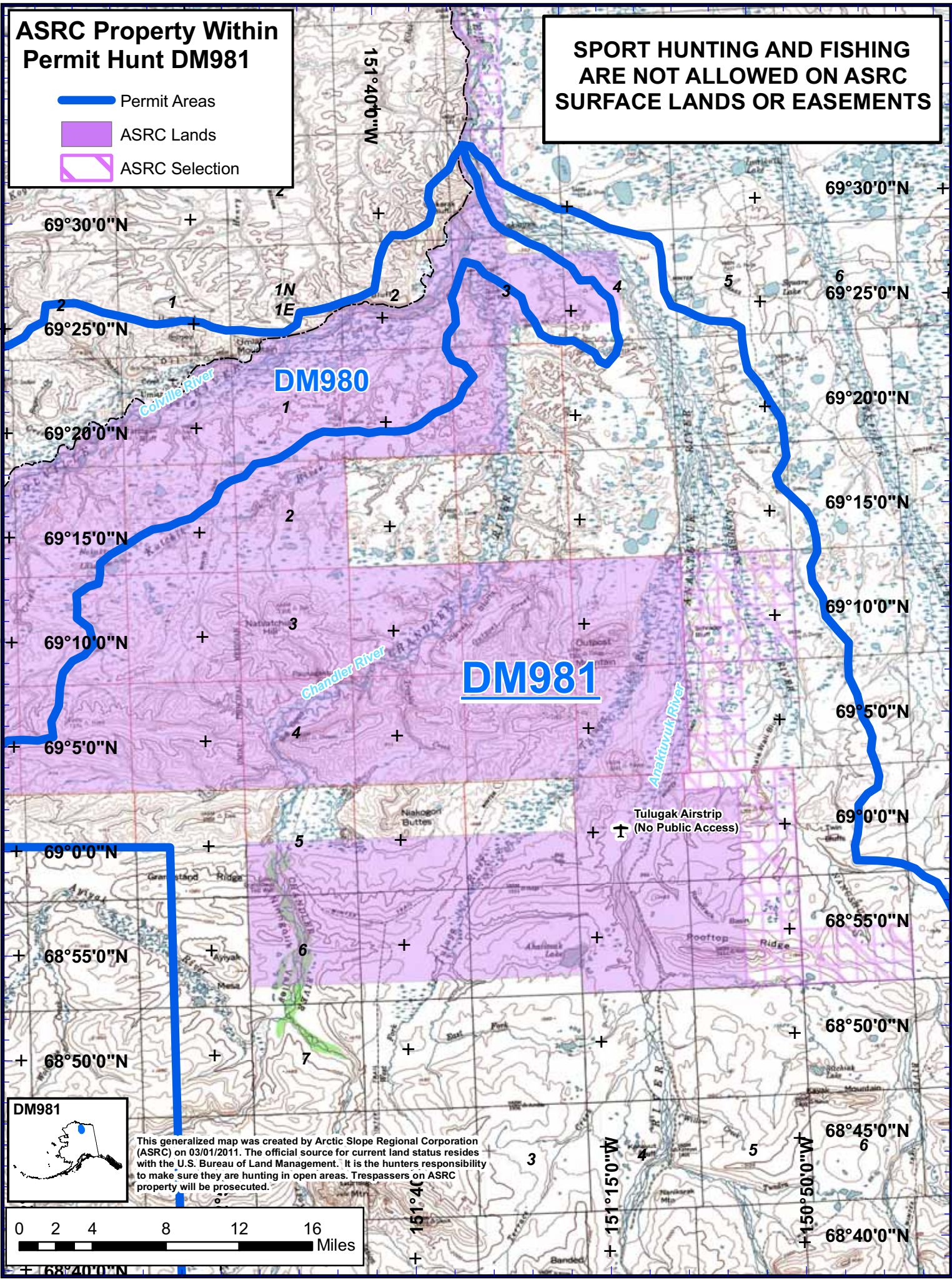


ASRC Property Within Permit Hunt DM981

-  Permit Areas
-  ASRC Lands
-  ASRC Selection

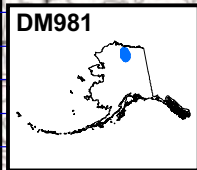
SPORT HUNTING AND FISHING ARE NOT ALLOWED ON ASRC SURFACE LANDS OR EASEMENTS



DM980

DM981

Tulugak Airstrip
(No Public Access)



This generalized map was created by Arctic Slope Regional Corporation (ASRC) on 03/01/2011. The official source for current land status resides with the U.S. Bureau of Land Management. It is the hunters responsibility to make sure they are hunting in open areas. Trespassers on ASRC property will be prosecuted.

